



Installation Guide

Pot Filler

Suits Models:

30577 30737 30962 30963 30964 35141

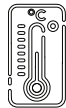
Important requirements:



Must be fitted in accordance with AS/NZS 3500 by qualified plumber



Mains 500kpa regulator must be fitted



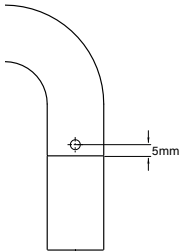
Maximum hot water temp. 65°C



Only clean municipal water supply. No bore, dam or hard water without filtration & treatment

Due to safety and industry standards, it is important that – where required – the Blue or Red vinyl sticker provided in the box are firmly applied to the end of the spout in the position indicated in the diagram. Use the following table to determine the marking requirements.

Water supply	Marking requirement
From separate mixer valve	No sticker required
Cold / ambient	Use BLUE vinyl sticker
Hot water	Use RED vinyl sticker



Cleaning

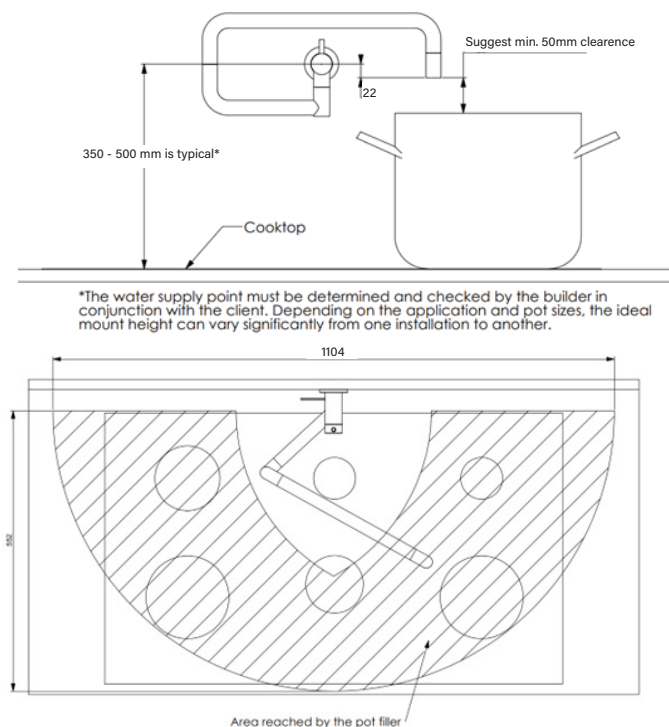
Clean only with a soft microfiber or similar cloth and warm clean water. Ensure that the cloth is clean and free of any grit or chemical. Dry tap off with a soft clean cloth. Ensure that your tap is not subject to any chemicals, building grit or any type of abrasive or polish. For care of special finishes please visit our website.

Maintenance

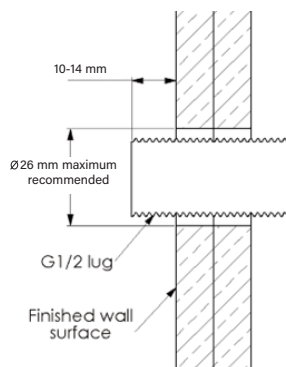
Aerators may need to be flushed from time to time if flow diminishes or stream pattern deteriorates. Use the aerator key provided to unscrew the aerator. You will notice a “castle” pattern around the edge of the aerator, the key engages with this allowing you to unscrew the insert easily. Rinse off the upper face of the insert with running water and gently brush clean with an old toothbrush to remove any debris, then refit the aerator and tighten sufficiently to prevent removal by hand.

Installation:

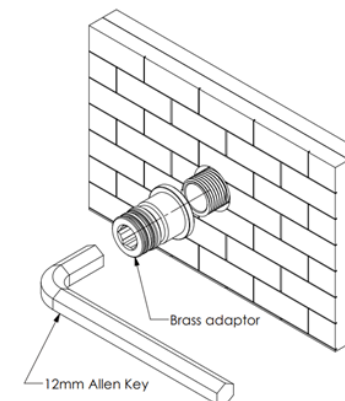
1. This product has been designed to screw over an existing G ½" water supply lug. It is essential that the water supply lug has been positioned to suit this product and the particular requirements of your installation – please refer to images below. Note that there is a small zone which is not reached by the Pot filler – this needs to be positioned for optimal functionality.



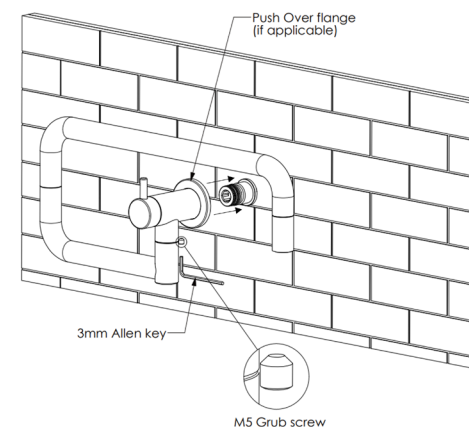
2. Ensure the G ½" lug is protruding the correct amount from the finished wall surface, refer to diagram below



3. Remove any debris or tile glue from the threaded lug and apply thread tape or approved thread sealant to the thread. Using a 12mm hex wrench, thread the brass adaptor over the lug and screw it up until it contacts the finished tile or wall surface. Do not use vice grips otherwise the O-rings may be damaged causing leaks. It is important that the brass adaptor is stiff to turn as this is required for the tap stability. If needed, remove the adaptor and apply more thread tape etc.



4. Flush out the water supply line by running a liberal amount of water into a bucket.
5. If supplied (depending on the model), gently push the flange over the back end of the tap body. Wet the two O-rings on the outside of the brass adaptor, then push the complete tap assembly over the adaptor as shown. Ensure it is firmly up against the wall. While supporting the tap, insert the M5 grub screw into the underside of the body and thread in loosely using the 3mm hex Allen key provided. Align the tap so that it is sitting square, then firmly lock the grub screw in place. If supplied, carefully slide the flange up against the wall.



6. Place a bucket or container under the end of the tap spout. Open both cartridges on the tap and switch on the supply water and allow it to flow through the tap for 5-10 seconds. Close each cartridge one at a time (the primary handle is located on the main body of the tap, and the secondary handle is located at the end of the spout) to ensure everything is functioning properly.
7. Seek assistance from Faucet Strommen should anything not be functioning to expectation.