



# Installation Guide

## Grab Rail - Straigh Bar

### Suits Models:

36300 36301 36302 36303 36304

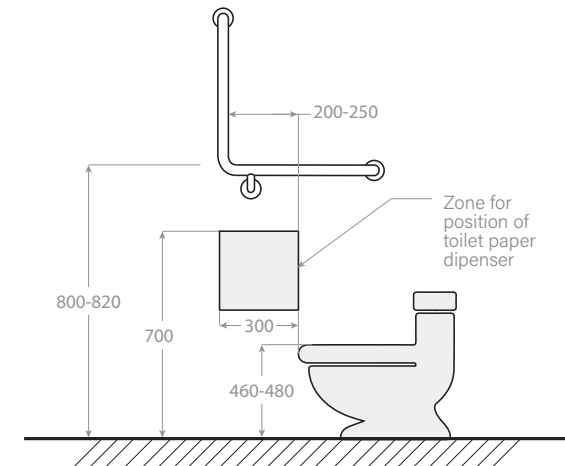
### Important requirements:

This product is designed to be installed by a qualified professional installer. Public buildings have specific requirements for length, angle and position of grab rails in AS1428.1 bathrooms. . To guarantee full compliance with these regulations, it is imperative to install the product according to the specifications provided below.

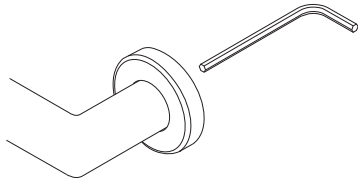
### Cleaning

Clean only with a soft microfiber or similar cloth and warm clean water. Ensure that the cloth is clean and free of any grit or chemical. Dry tap off with a soft clean cloth. Ensure that your tap is not subject to any chemicals, building grit or any type of abrasive or polish. For care of special finishes please visit our website.


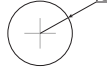
### Installation measurements for DDA complaint bathrooms



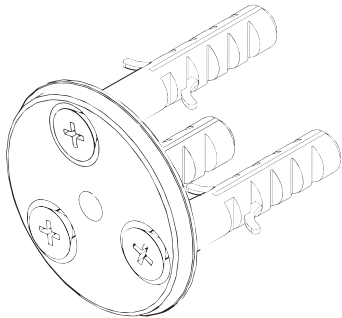
1. Loosen the screw using the 8mm Allen key provided to adjust the arm to the desired position. Once the position is determined, securely tighten the screw back in place.



2. Use the grab rail as a template and mark up your holes with a pencil. If you are mounting onto tiles, keep the holes away from the edges of the tiles. If you are mounting onto Masonry use the wall plugs provided.
3. Size hole guidance

	Hole Size
<b>Timber</b> (Without wall plug)	 $\varnothing 5\text{mm}$
<b>Masonry</b> (With wall plug)	 $\varnothing 8\text{mm}$

5. With the grab rail removed, unscrew the wall plate and screw it on the marks previously done.



6. Install Grab Rail: Line up the grab rail with the wall plate and screw the wall nut.
7. Tighten the grub screw on the wall nut with the 2mm allen key provided.
8. Gently slide the flange back in place.

